

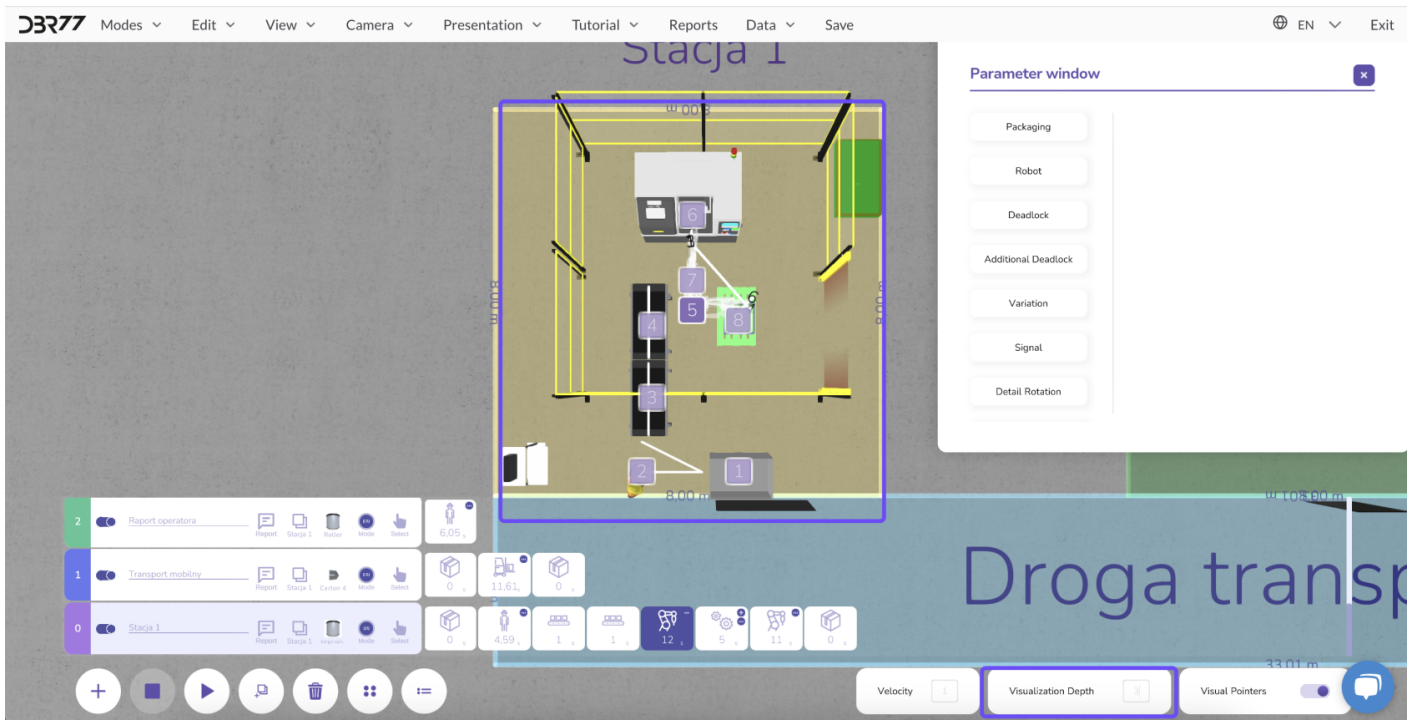
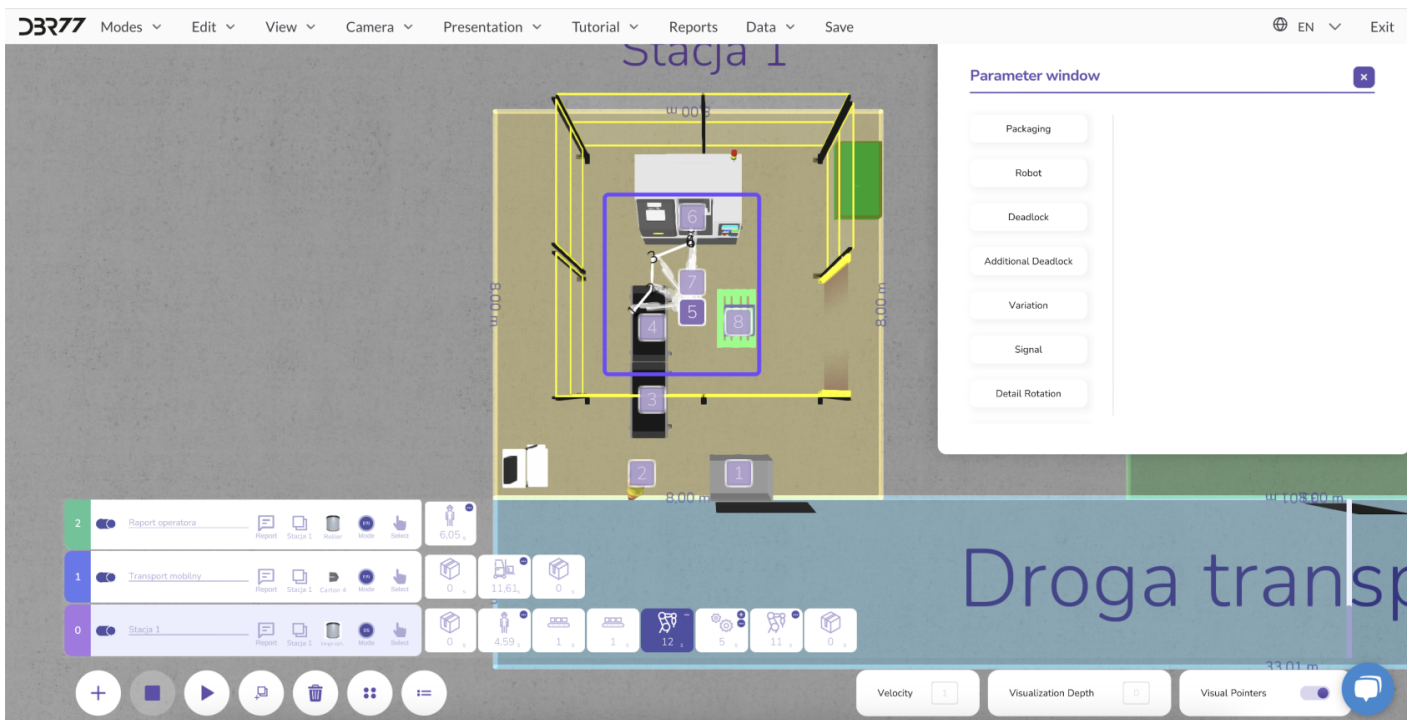
# The Depth of Visualization

The Depth of Visualization allows you to control how many elements in the scene, along with their motion paths, are highlighted in relation to the currently selected element.



## How Depth of Visualization Works:

- Entering a **value of "0"**: Only the motion path of the currently selected element is highlighted.
- Entering a **value greater than "0"**: For example, with a value of "2," two motion paths of elements before and two paths of elements after the selected object are highlighted.



## Functionality:

- **Precise Control:** Enables tracking of the selected element and its dependencies on other elements in the scene that influence it or depend on it.
- **Simplified Planning:** By analyzing movements in relation to other objects, you can better understand how elements in the scene work together.

This feature is particularly useful for analyzing complex processes where the interaction of various elements plays a critical role.

